

# INVESTING IN BALTIMORE'S WORKFORCE:

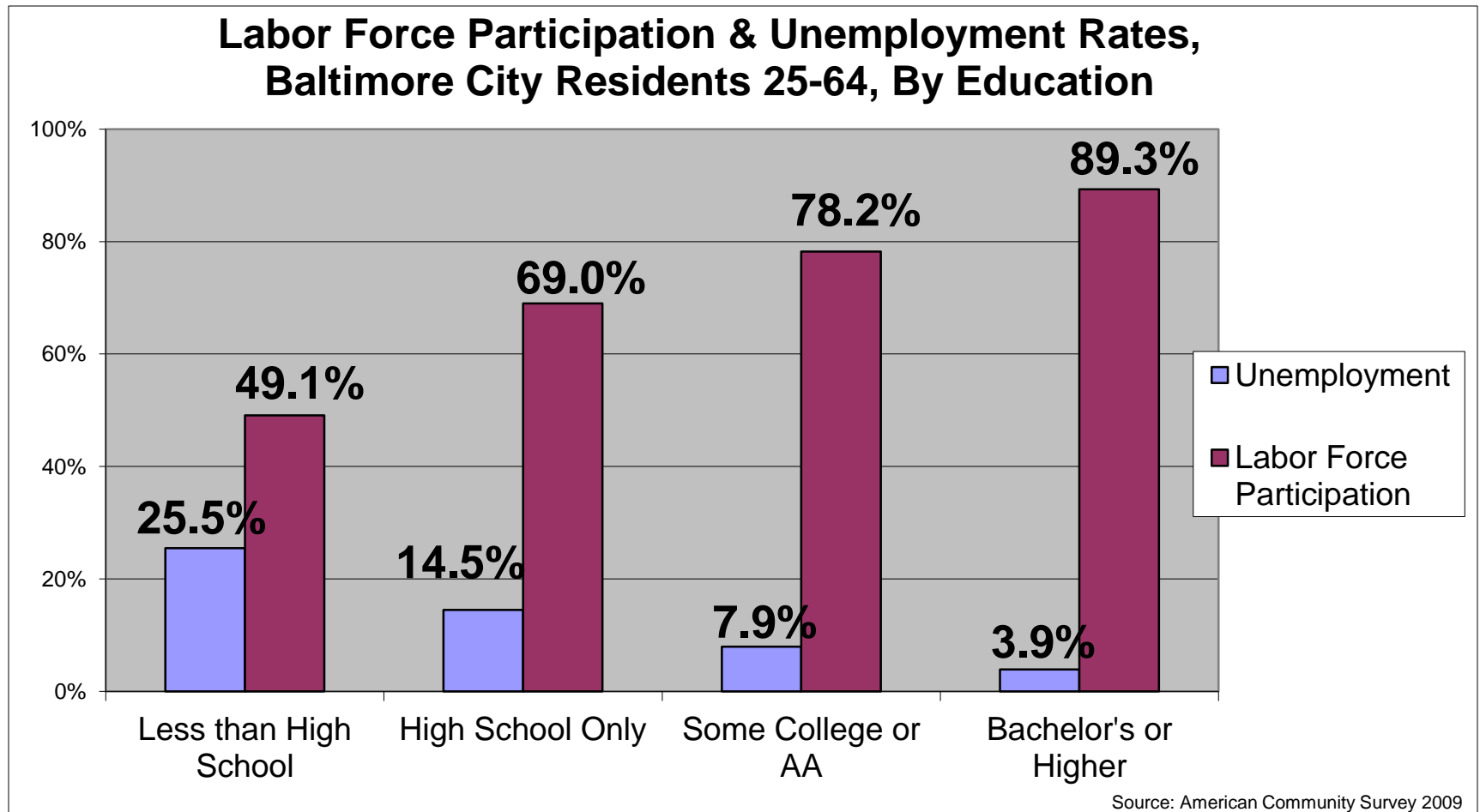
## LEVERAGING OPPORTUNITY AND MOVING TO SCALE

Andrea Roethke, The Job Opportunities Task Force  
May 28, 2013

# A Changing Economy

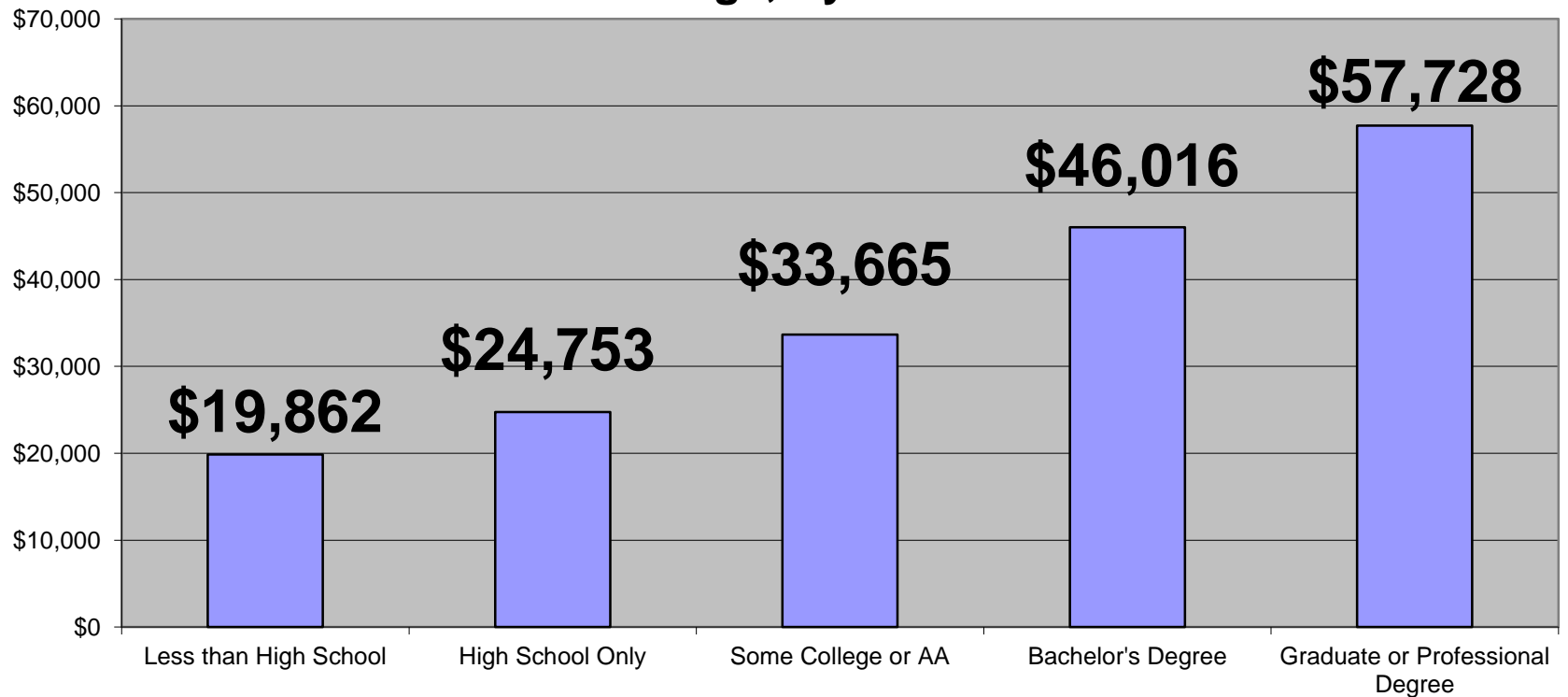
- Decline in Manufacturing
  - Loss of 140,000 Baltimore-area manufacturing jobs since 1969
  - Drop from 20% of area jobs in 1969 to just 4% today
- Rise of Service Economy
  - Service jobs tripled since 1969
  - Only area with private sector growth in Balt. City
  - Driven by demand for healthcare

# Education Needed to Advance



# Education Needed to Advance

**Median Earnings, Baltimore City Residents 25+ with Earnings, By Education**



Source: American Community Survey 2009

# Significant Gaps to Close

- Half of workers living in Baltimore City earn < \$30,000 per year
- 26,152 officially unemployed as of April '13
- 80,000 adults lack a high school diploma
- 120,000 have no education beyond high school
- 5,000 city residents incarcerated in 2011

# Investing in Training Works

- Workers:
  - ▣ Higher Wages
  - ▣ Lower Unemployment
- Employers:
  - ▣ Greater productivity
  - ▣ Higher profit margins
- Public Good:
  - ▣ Larger tax base
  - ▣ Reduced reliance on public benefits

# A Loose System

- Diverse Providers
  - ▣ Mayor's Office of Employment Development
  - ▣ Baltimore City Community College
  - ▣ Private Providers
    - Non-profit & For-profit
    - More than 40 providers in the city
- Diverse Funding Streams
  - ▣ Federal (WIA, TANF)
  - ▣ State (DLLR, DBED, MDOT)
  - ▣ Local
  - ▣ Philanthropic
  - ▣ Tuition-Based

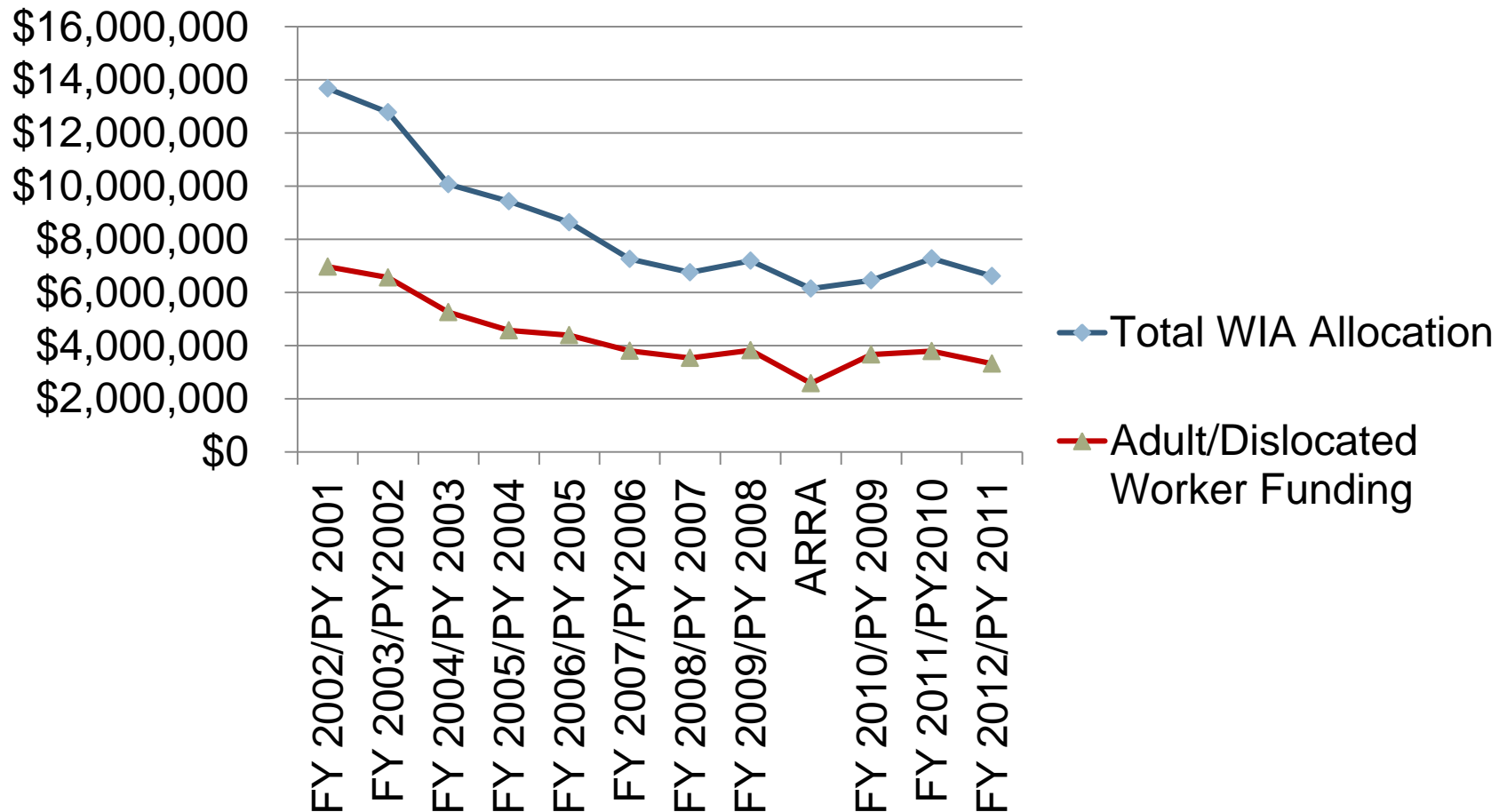
# The Workforce Investment Act

- Federal formula funding passed through states to local workforce investment areas
- Backbone of the workforce system
- Supports services for adults, dislocated workers and youth
- Funds One-Stop career centers
  - ▣ Core services
  - ▣ Intensive services
  - ▣ Training



# Limited WIA Resources

- City WIA allocation reduced by 50% since 2001



# Other MOED Resources

---

- Funds to serve TANF clients
- City general funds
- Grants for special projects
  - ▣ Programs for people criminal records
  - ▣ Targeted industry initiatives

# The Broader Workforce System



# 5 Strategies for a Stronger System



- Explore New Public Funding Streams
- Link Economic & Workforce Development
- Engage Employer Community
- Build a More Seamless Workforce Pipeline
- Bring Career Pathways to Scale

# Investing in Baltimore's Workforce



“When planning for a year, plant corn. When planning for a decade, plant trees. When planning for life, train and educate people.”

Chinese Proverb

# Panel Discussion



Moderated by Celeste Amato

President, Association of Baltimore Area Grantmakers

Featuring:

**Karen Sitnick**

Director, Mayor's Office of Employment Development

**Diane Bell-McKoy**

President & CEO, Associated Black Charities

**Leonard J. Howie III**

Secretary, Department of Labor, Licensing & Regulation